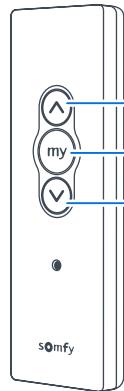




GET TO KNOW YOUR REMOTE

A remote can have one or more channels depending on your purchase. You can pair up to ten blinds per channel which will all be operated at the same time.

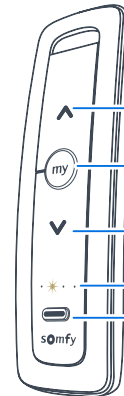
Note: Other Somfy controls and wall switches will operate the same way based on the control buttons.



SITUO RTS
Single Channel Control



SITUO 1 RTS
Single Channel Control



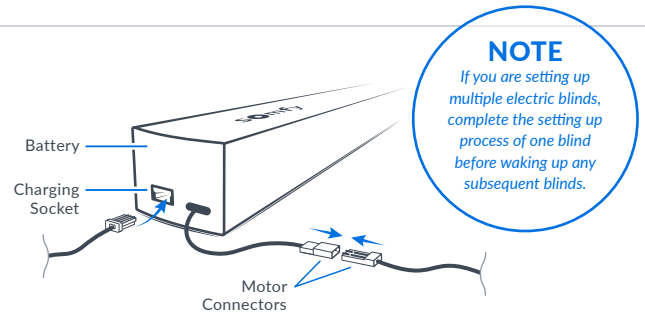
SITUO 5 RTS
Multi Channel Control



BEFORE YOU BEGIN PAIRING PROCESS AWAKE YOUR MOTOR

To activate the motor, connect the battery to the motor. The blind will jog up and down three times indicating the battery is active. The blind is now ready to pair with the remote. If your blind doesn't jog, simply plug in the power adapter for 3-4 hours.

Note: the charging connector will only fit one way. See graphic for more information.

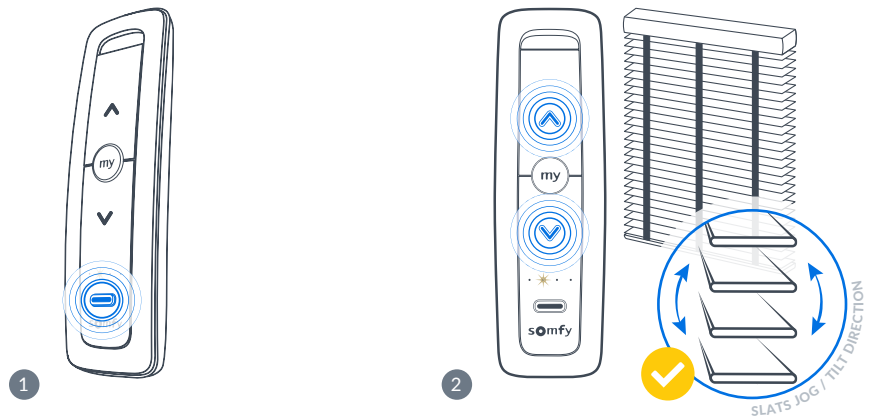


1 Pairing A Blind To A Remote

Whether you're setting up a single channel remote, or a multi channel remote, the setting up process is exactly the same.

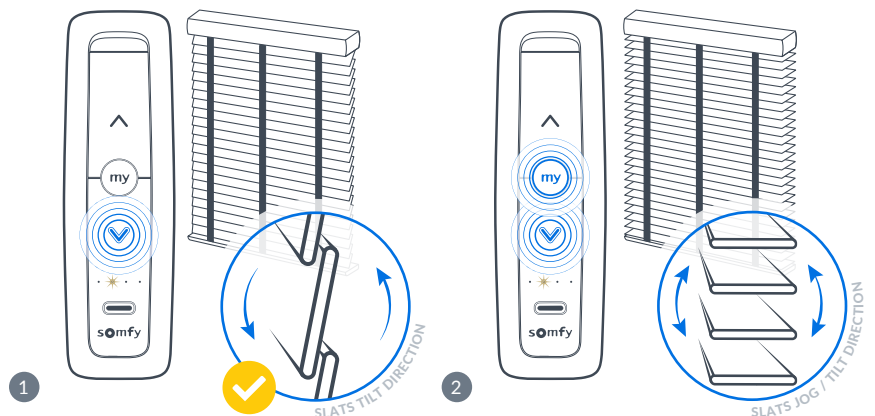
- 1 If you are using a multiple channel remote, set your remote to the channel you will connect this blind to.
- 2 To pair your remote to the blind, press the **UP** and **DOWN** BUTTONS on your remote together.

The blind will then briefly jog up and down indicating it is now paired with the remote.



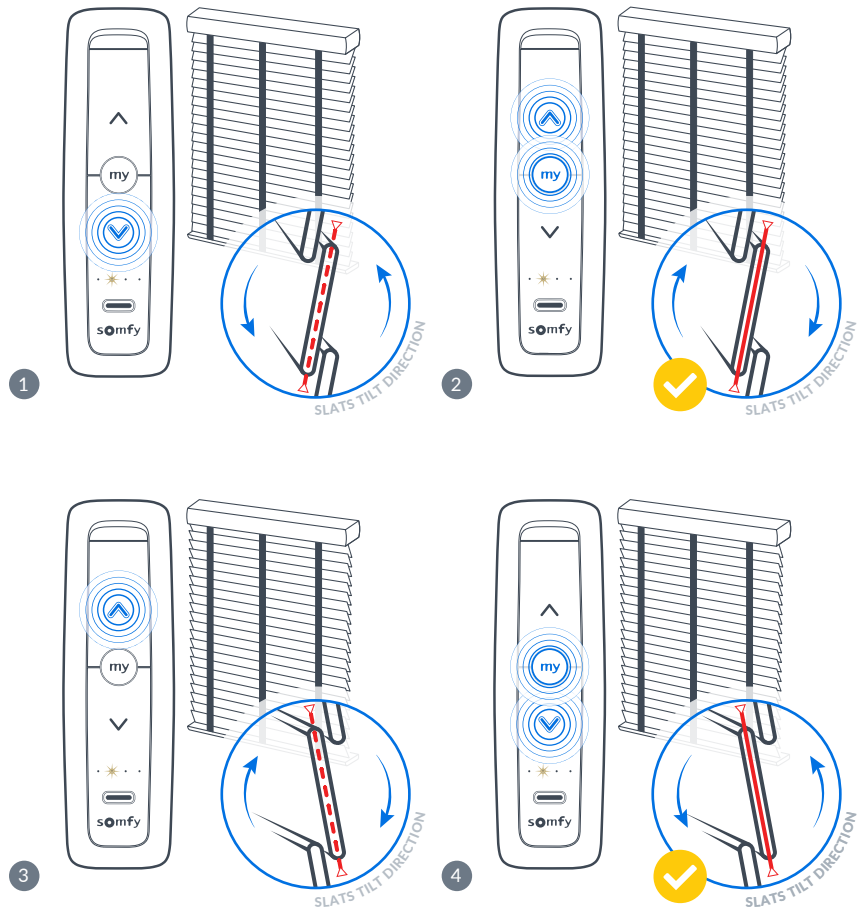
2 Checking The Direction Of Travel

- 1 Check the direction of travel by pressing and holding **DOWN** the **MY** BUTTON until the slats tilt. Release the button to stop it. If the slats point downward, it is correctly set up and you can progress directly to step **STEP 3**.
- 2 However, if the slats start to point upward while pressing the down button, press and hold the **"MY"** button until it jogs, and press the **DOWN** BUTTON again to verify the direction is now set correctly.



Setting Blind Slats Close Limits

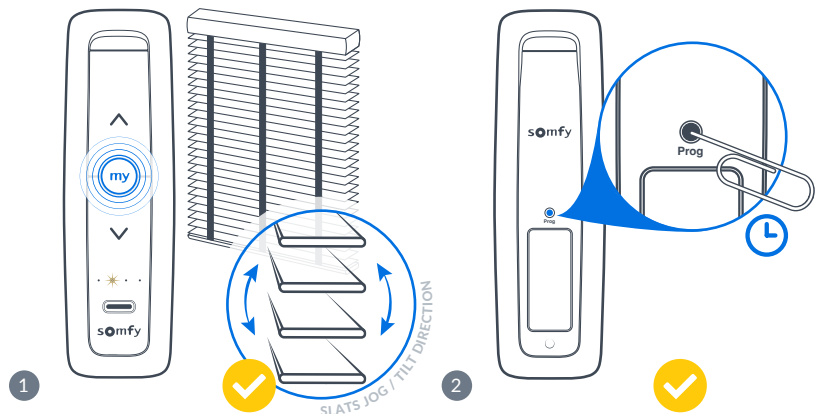
- 1 Press and hold the **DOWN BUTTON** until your blind is closed with the slats facing down. You can fine tune this by tapping the up and down buttons as required.
- 2 Once the slats are in your preferred down position, simultaneously press and hold both the **"MY"** and **UP BUTTONS** until the slats start to tilt backward. Then, instantly press the **"MY"** button to stop the blind. The slats down limit has been set.
- 3 Press and hold the **UP BUTTON** until your blind is closed with the slats facing up. You can fine tune this by tapping the up and down buttons as required.
- 4 Click and hold the **"MY"** and **DOWN BUTTONS** to confirm this limit. This will then automatically tilt the slats downward to the closed position.



Completing The Programming Process

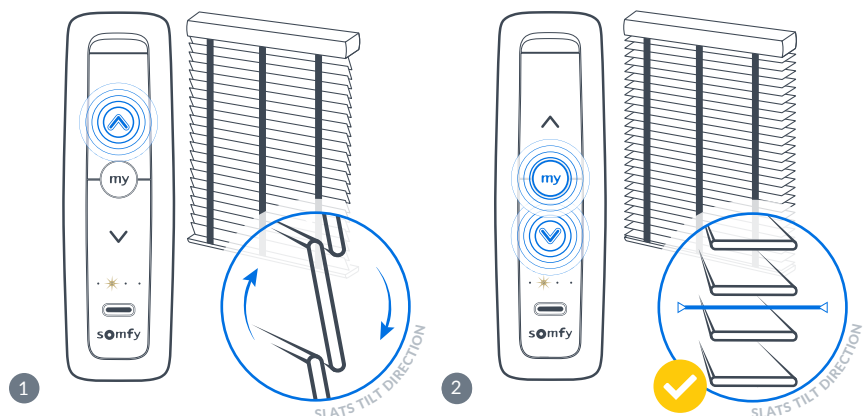
- 1 Press and hold the **"MY"** BUTTON until the blind briefly jogs up and down.
- 2 Complete the process, using a pin or paperclip to tap (0.5s) the **"PROG"** BUTTON on the back of the remote once. The blind will jog up and down to confirm. The programming process is complete and the blind motor is programmed.

The blind will now operate with a brief press of the Up or Down buttons and automatically stop at the preset stop positions.



Setting Blind Slats Open Limits

- 1 To set the open limit, i.e the slats are horizontal, press and hold the **UP BUTTON** until the slats are fully open. Release the button at your desired position.
- 2 Once you are happy with the position of the slats, press and hold the **"MY"** button. The slats will then jog to confirm.
You can now use the up and down buttons to close your blinds in your desired direction, and use the "MY" button to open the blinds fully. To find your ideal level of light, press and hold the up or down button as required.



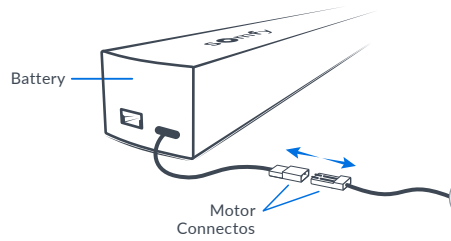


Before Setting Up Your Next Blind

Before moving to the next blind, activate sleep mode for the previously set up blind(s) by disconnecting their batteries.

Do not plug any batteries back in until all blind limits have been set.

Once all blinds are set up, reconnect the batteries to each blind.



NOTE

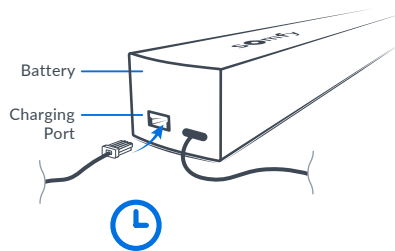
You must have completed the previous steps including the completing the programming process before moving on to set up the next blind.



Recharging The Battery

Depending on the size of your blinds, the motor will need recharging typically every 6-12 months. Your motor is powered by an external rechargeable battery, and when it needs recharging, the blind will jog intermittently to draw attention. To charge the battery, simply plug the battery in with the provided power adapter for 3-4 hours. It will jog and the LED on the plug will turn red. Once the LED turns green, the battery is fully charged.

Note: the charging connector will only fit one way. See graphic for more information.





ADVANCED SETTINGS

Adding Multiple Blinds To A Control Channel On A Multichannel Remote

- To add multiple blinds to one channel so that they operate at the same time, follow these steps.
- Select the existing channel you'd like to copy then press and hold the "prog" button on the back of the remote until the blind jogs.
- Select the channel to become the "multi blind channel" and tap the "prog" button on the back of the remote until the appropriate blind jogs. This indicates the settings have been copied.
- Repeat as needed to add more blinds to your designated "multi blind channel".

Adjusting Upper & Lower Limits

- Once your blind is set up, if you need to edit your open or closed limits, first move your blind to the limit you want to adjust.
- Click and hold the up and down buttons simultaneously until the blind jogs up and down.
- Click and hold the up or down buttons to move the limit.
- Click and hold the "MY" button until the blind jogs to confirm the new limit.

Changing Speed

- To change the speed of your blind, first move the blind to a non-preset position.
- Press all three buttons on the front of the remote at the same time.
- The blind will begin moving up and down to demonstrate the speed options.
- Click and hold the up button, the blind will stop, jog and move to a quicker setting.
- Alternatively, hold the down button, the blind will stop, jog, and move to a slower setting.
- If the blind has reached the quickest or slowest setting, the blind will jog up and down three times and continue moving. Click and hold the "MY" button to confirm the new speed. The blind will jog to confirm.



Electric Blinds - Recycling Expired Batteries

We are committed to reducing waste. As part of this commitment we will accept returned motors and batteries and arrange for the recycling of expired motors and batteries from your electric blind.

To arrange collection:

- Call 01924 481729 and let us know you are planning to return your battery.
- Remove the motor from the headrail, and the battery from the blind and package securely, including your original order number on the packaging.
- Arrange delivery of your package via a courier of your choice.
- Upon receipt the battery will be recycled with appropriate waste management services.