



Solar Skylight Blind Installation

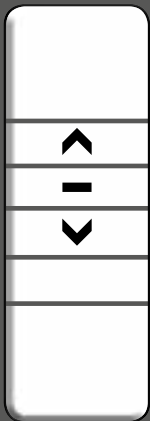
For Velux®, RoofLITE®, Dakstra® and DAKEA® Roof Windows



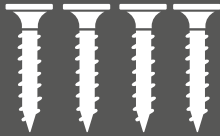
BLC-1165

Components

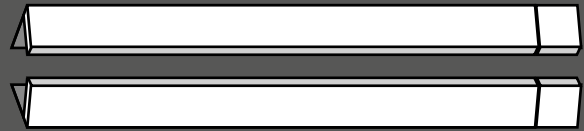
Check all the components have been supplied



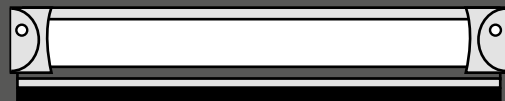
Remote control



Screws (x4)



Side Rails (x2)



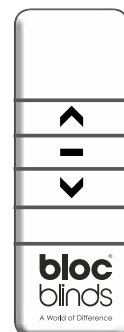
Cassette (x1)

Tools Required



WARNING

DO NOT OPERATE REMOTE CONTROL UNTIL THE BLIND HAS BEEN FULLY INSTALLED.

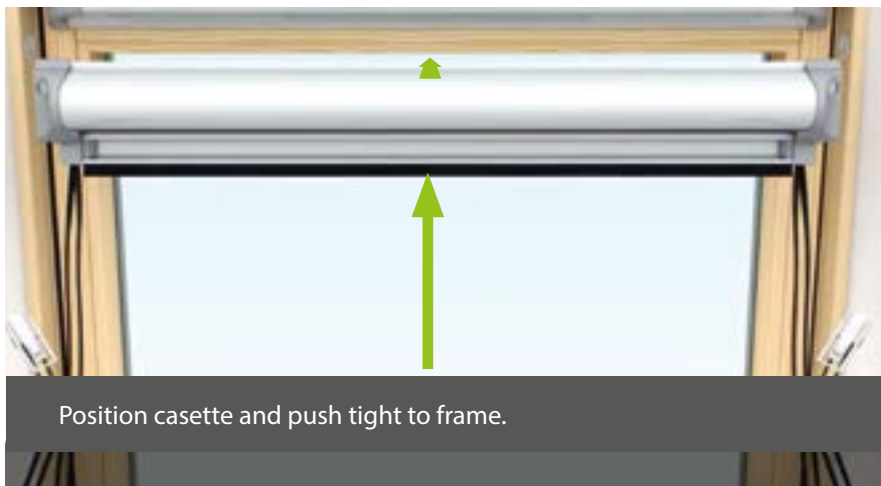


Instructions

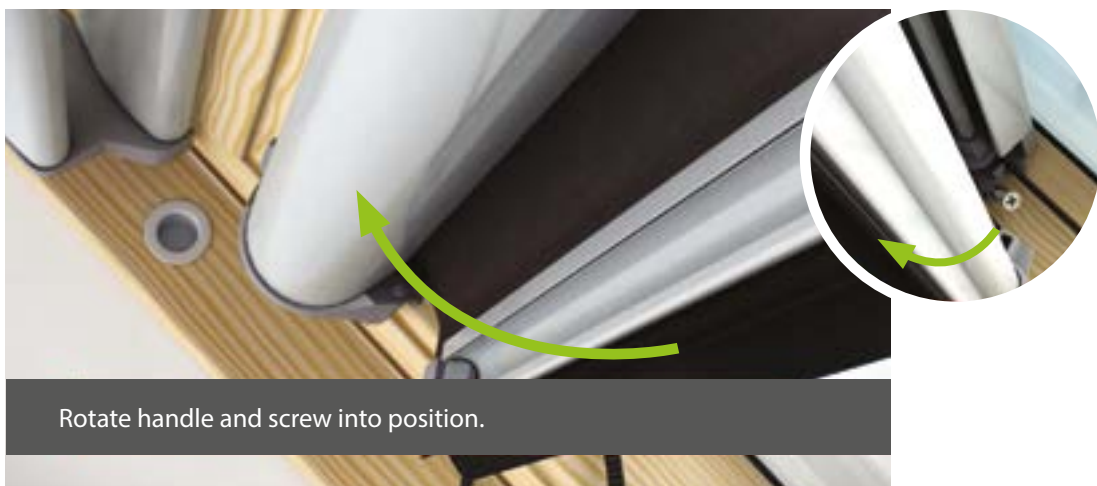
1



2



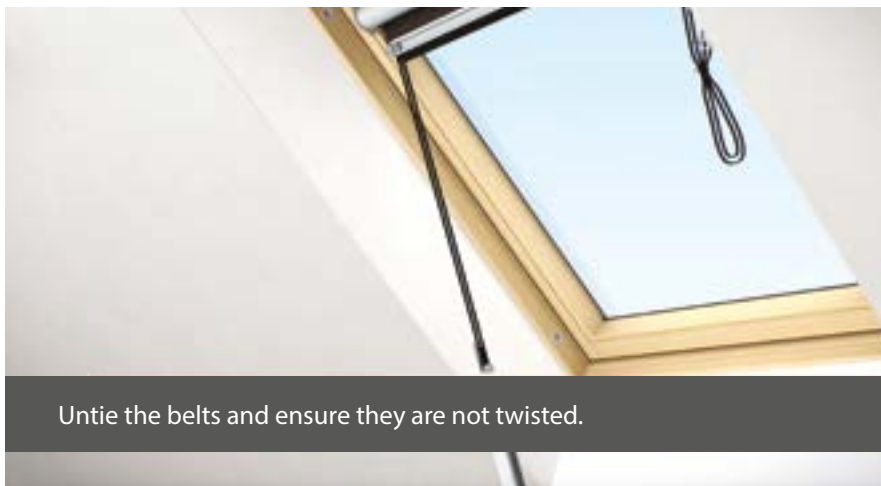
3



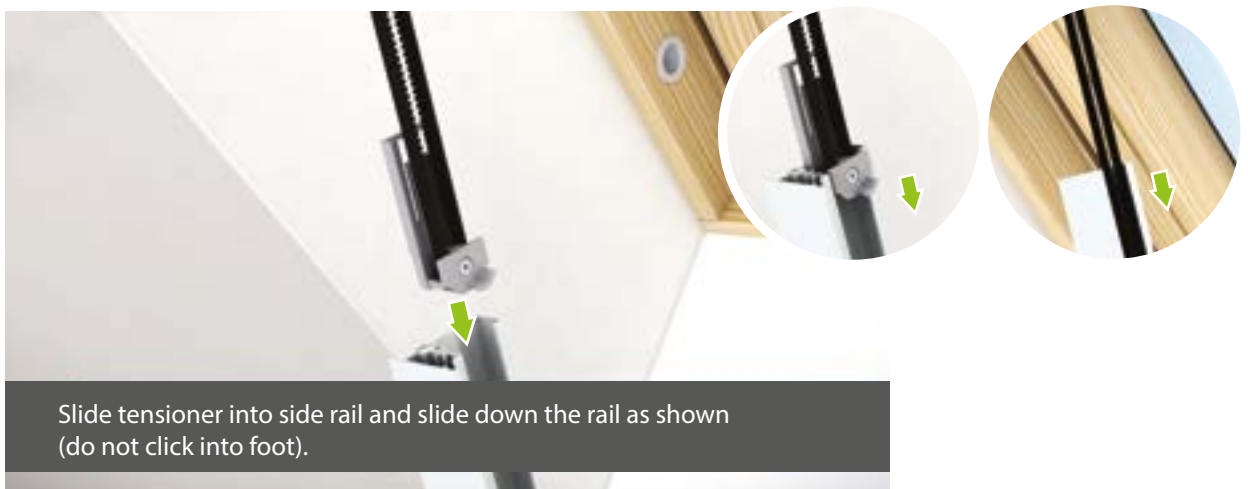
4



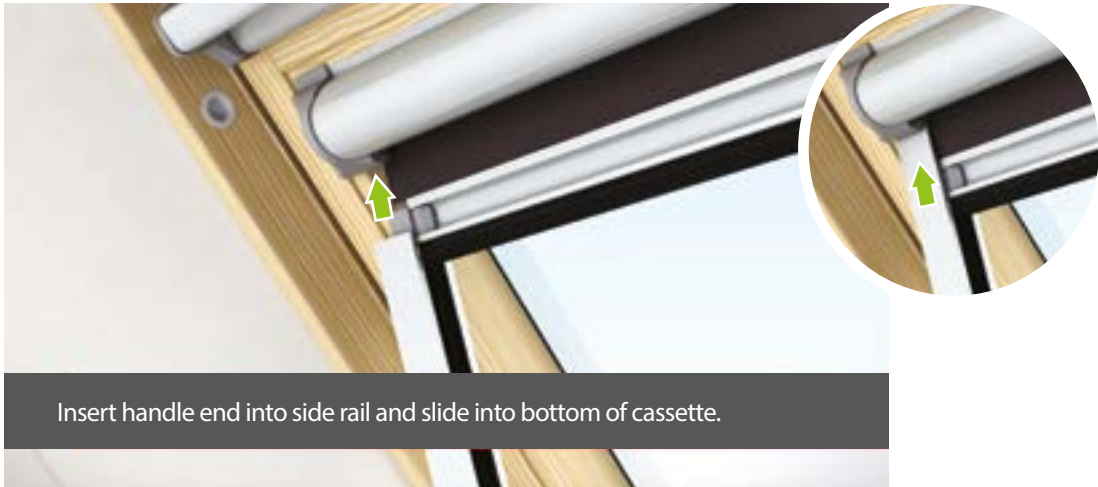
5



6



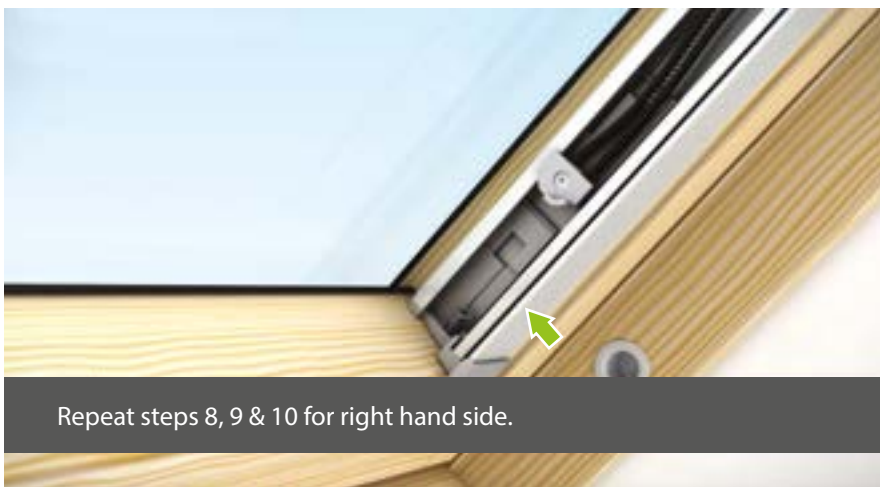
7



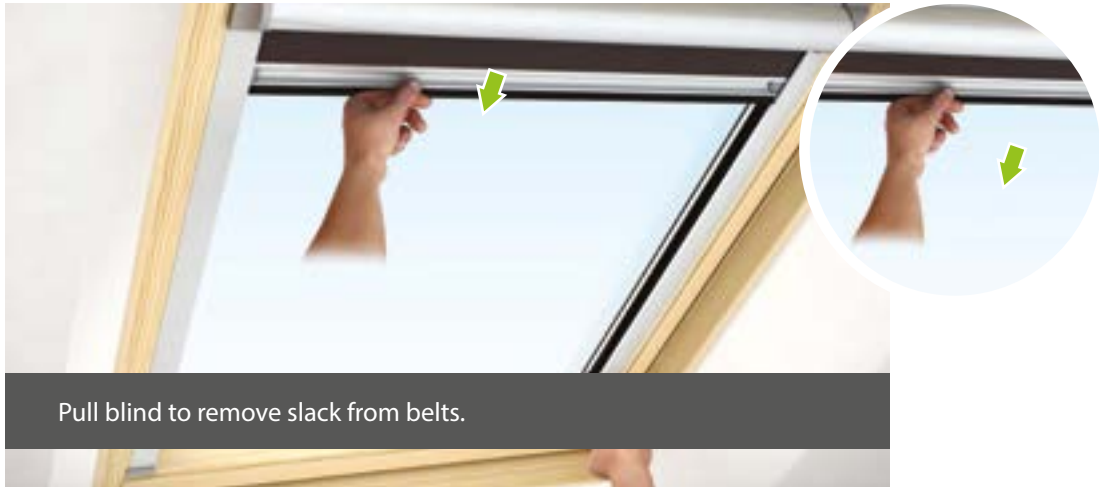
8



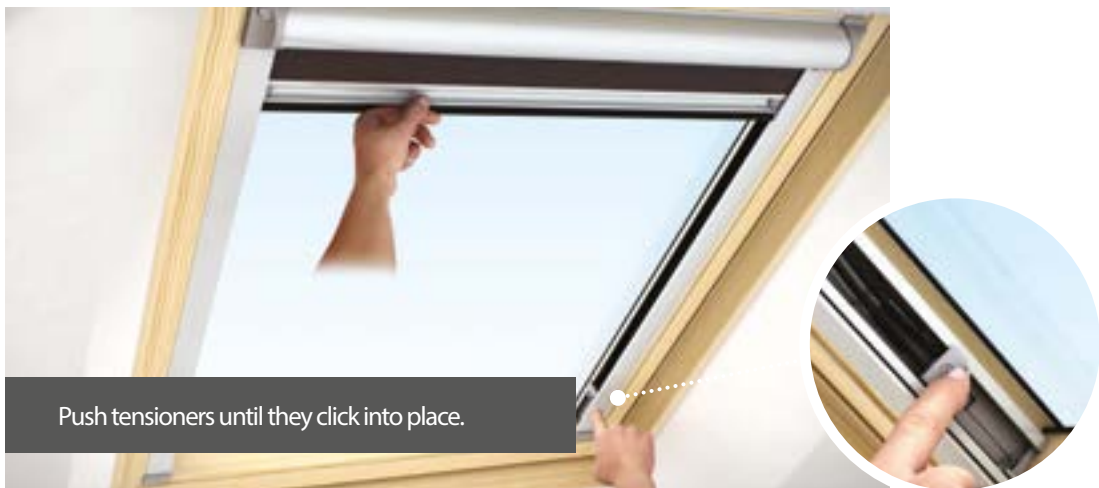
9



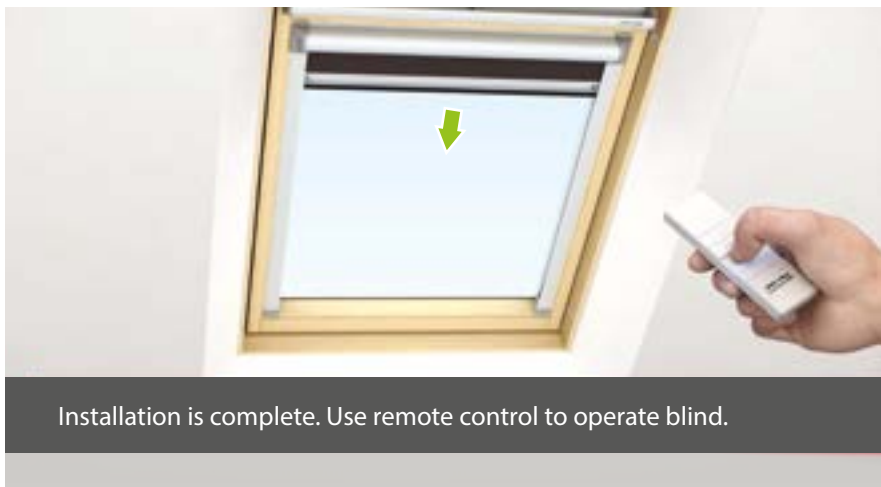
10



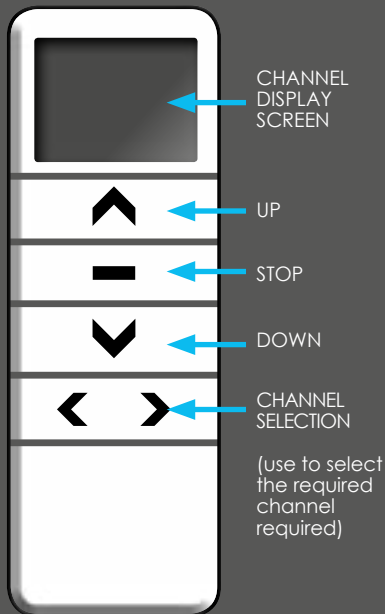
11



12



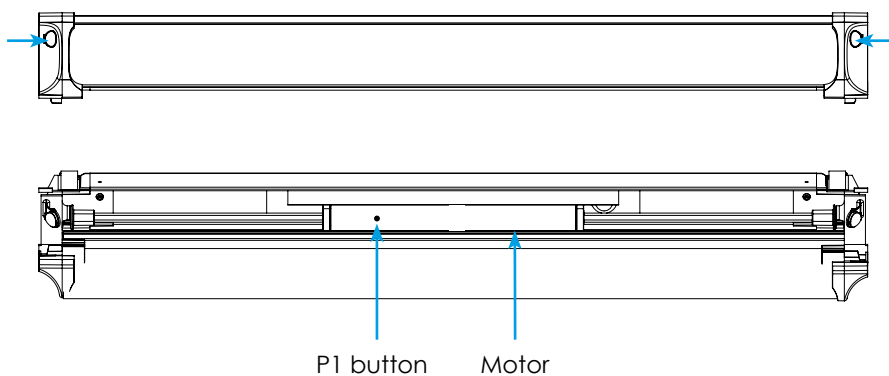
Blind Operation



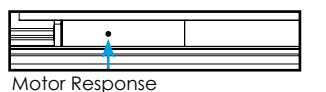
PAIRING THE REMOTE

When using a multichannel remote the channel number the user wishes to use must be selected first on the remote before pairing.

Open the blind cassette by pressing the 2 buttons on either end of the cassette to release and rotate forward.



Hold P1 button on motor head

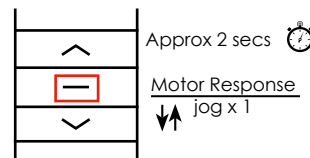


Motor Response

Approx 2 secs ⌚ ↕ jog x 1

Motor

Press and hold stop on Remote Control.



The remote should now be paired and operate the blind, to add additional blinds select another channel on the remote and repeat process above.

OPERATION

Close the blind: press and hold the down button on the remote control for 1 second then release the blind will begin to close, the blind will stop automatically at the bottom of the window.

Open the blind: press and hold the up button on the remote control for 1 second then release the blind will begin to open, the blind will stop automatically at the top of the window.

The blind can be stopped at any point during an open or close cycle by pressing the stop button for 1 second then releasing.